

# *Fujinomiya Bulletin*

## *April 2022*



# COVID-19 related information

## Vaccination

### The 3rd vaccination

Vaccinations are eligible for those who have been vaccinated 6 months after the second vaccination. Once you receive your vaccination ticket, you can make an appointment online or by phone.

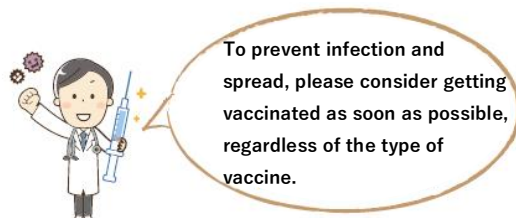


### Those who have not received the vaccination ticket.

If you have not received your vaccination ticket 6 months after the second vaccination, please contact the Health Promotion Division (*Kenko Zoshin-ka*).

### Let's get vaccinated as soon as possible.

It has been reported that the effectiveness of two doses of vaccine gradually decreases over time.



### Latest Information

**HP** [トップページ>市民の皆さんへ>](#)

[健康・福祉>新型コロナウイルス感染症>  
新型コロナウイルスワクチン接種について](#)



### 【Over 12 years old】 1st and 2nd vaccinations

Vaccinations are available at medical institutions in the city.

The second vaccination can be given at the same time and place 3 weeks after the first one.

### Those who have lost the vaccination ticket.

For reissue, please contact the Health Promotion Division (*Kenko Zoshin-ka*).



### 【5-11 years old】 1st and 2nd vaccinations

### Shipping of Vaccination Tickets

9-11 years old: Shipped in mid-March

5-8 years old: Will ship in mid-April



### Those who want to get vaccinated early.

If your family doctor, etc. recommends early vaccination, we will send you your vaccination ticket regardless of your age.

### Vaccination Methods

We use pediatric vaccines (manufactured by Pfizer).

The second vaccination will be given 3 weeks after the first one.

Parental consent and accompaniment are required. (For more information, please see the flyer that you will receive with your vaccination ticket.)

**Inquiry** Health Promotion Division (*Kenko Zoshin-ka*)

☎ 0544-22-2727 FAX 0544-28-0267

## Thorough infection control measures even after vaccinations.

Wash your hands frequently.



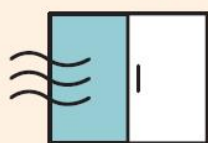
Always wear a mask during conversations.



When eating or drinking, small group, short time, usual members.

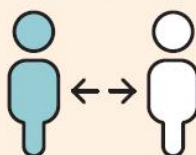


Ventilate frequently.



Avoid the 3Cs\*.

\*Closed spaces  
Crowded places  
Close-contact settings

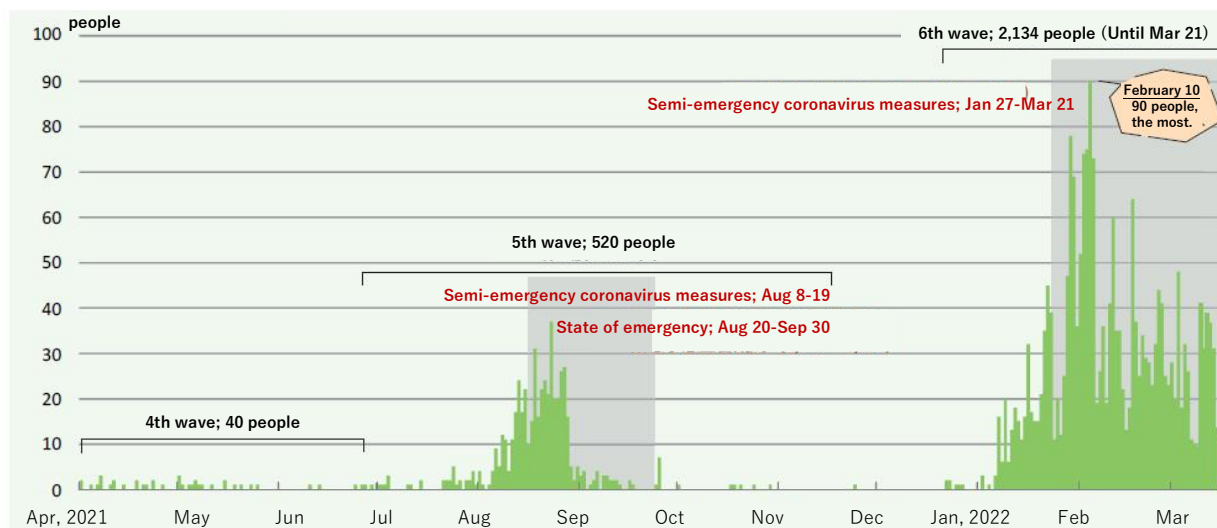


Do not go out unnecessarily or non-urgently.



## Number of newly infected people in the city

The number of COVID-19 cases in the city up to March 21 was 2,830.  
In the 6th wave, the infection is spreading more rapidly than ever before.



## FY 2022 Deadlines for payment of City Taxes, etc.

-Please pay by the due date.-

	City Taxes				Medical Insurance Premiums for the elderly in the latter stage of life	Long Term Care Insurance Premium	Water charges Sewerage charges※	Contributions of beneficiaries of sewerage services	Child care fee Public Nursery Side Meal Fee	Municipal housing fee Parking fee
	Property Tax City Planning Tax	KEI JIDOSHA Tax *Small Cars of Japanese Standard	Municipal Tax Prefectural Tax	Natinal Health Insurance Tax						
April 2022							For Mar (Apr 28)			
May	1st term (May 6)						For Apr (May 30)		For Apr (May 2) For May (May 31)	For Apr (May 2) For May (May 31)
June		Full term (Jun 3)					For May (Jun 28)	1st term (Jun 30)	For Jun (Jun 30)	For Jun (Jun 30)
July			1st term (Jul 4)				For Jun (Jul 28)			
August	2nd term (Aug 3)			1st term (Aug 3)	1st term (Aug 31)	1st term (Aug 3)	For Jul (Aug 29)		For Jul (Aug 1) For Aug (Aug 31)	For Jul (Aug 1) For Aug (Aug 31)
September			2nd term (Sep 5)	2nd term (Sep 5)	2nd term (Sep 30)	2nd term (Sep 5)	For Aug (Sep 28)	2nd term (Sep 30)	For Sep (Sep 30)	For Sep (Sep 30)
October				3rd term (Oct 3)	3rd term (Oct 31)	3rd term (Oct 3)	For Sep (Oct 28)		For Oct (Oct 31)	For Oct (Oct 31)
November			3rd term (Nov 4)	4th term (Nov 4)	4th term (Nov 30)	4th term (Nov 4)	For Oct (Nov 28)	3rd term (Nov 30)	For Nov (Nov 30)	For Nov (Nov 30)
December				5th term (Dec 5)		5th term (Dec 5)	For Nov (Dec 28)			
January 2023	3rd term (Jan 4)			6th term (Jan 4)	5th term (Jan 4) 6th term (Jan 31)	6th term (Jan 4)	For Dec (Jan 30)	4th term (Jan 31)	For Dec (Jan 4) For Jan (Jan 31)	For Dec (Jan 4) For Jan (Jan 31)
February			4th term (Feb 3)	7th term (Feb 3)	7th term (Feb 28)	7th term (Feb 3)	For Jan (Feb 28)		For Feb (Feb 28)	For Feb (Feb 28)
March	4th term (Mar 3)			8th term (Mar 3) 9th term (Mar 31)	8th term (Mar 31)	8th term (Mar 3) 9th term (Mar 31)	For Feb (Mar 28)		For Mar (Mar 31)	For Mar (Mar 31)

※We will bill every other month. (Even or odd months, depending on the area.)

The date of withdrawal from the account is the 10th of the following month. (If the financial institutions are on a holiday, it will be the following business day.)

## Inquiries about city taxes and various fees

Regarding Payment of City Taxes		Tax & Premium Collection Division (Shuno-ka)	Nozei-kakari (consultation)	☎0544-22-1129	FAX 0544-22-1227
			Zeisei-kakari (bank account transfer)	☎0544-22-1128	FAX 0544-22-1227
Regarding Taxation of City taxes	Property Tax	Property Tax Division	Tochi-kakari	☎0544-22-1127	FAX 0544-22-1227
	City Planning Tax	(Shisanzei-ka)	Kaoku-kakari	☎0544-22-1249	FAX 0544-22-1227
	Municipal Tax	City Tax Division (Shiminzei-ka)	Shiminzei-kakari	☎0544-22-1126	FAX 0544-22-1227
	Prefectural Tax		Hojin shozei-kakari	☎0544-22-1125	FAX 0544-22-1227
	KEI JIDOSHA Tax *Small Cars of Japanese Standard				
Natal Health Insurance Tax		Insurance and Pension Division (Hoken Nenkin-ka)	Shikaku fuka-kakari	☎0544-22-1138	FAX 0544-28-1351
Medical Insurance Premiums for the elderly in the latter stage of life		Insurance and Pension Division (Hoken Nenkin-ka)	Koki koreisha hoken-kakari	☎0544-22-1482	FAX 0544-28-1351
Long Term Care Insurance Premium		Elderly Care Support Division (Korei Kaigo Shien-ka)	Kaigo hoken-kakari	☎0544-22-1141	FAX 0544-28-4345
Water charges Sewerage charges		Water Works Division (Suido gyomu-ka)	Eigyo-kakari (Customer Center)	☎0544-22-1178	FAX 0544-22-1105
Contributions of beneficiaries of sewerage services		Sewerage Division (Gesuido-ka)	Gyomu-kakari	☎0544-22-1172	FAX 0544-22-1208
Child care fee		Child Future Division (Kodomo Mirai-ka)	Hoiku-kakari	☎0544-22-1147	FAX 0544-22-1401
Municipal housing Parking fee		Construction and Housing Division (Kenchiku Jyutaku Ka)	Jyutaku kanri-kakari	☎0544-22-1163	FAX 0544-22-1208

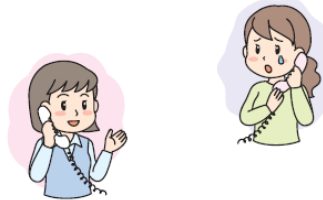
## Information on Pregnancy, Children, Childcare

### If your child get sick suddenly

**Inquiry** Shizuoka child emergency telephone consultation (*Shizuoka Kodomo Kyukyu Denwa Sodan*)  
☎#8000 or 054-247-9910

**Time** Weekdays 18:00~following 8:00  
Saturdays 13:00~following 8:00  
Sundays, holidays 8:00~following 8:00

In case of **emergency**, do not hesitate to call ☎119



### If you thought it might be abuse

**Inquiry** Child Guidance Center (*Jido sodan jo*)  
Nationwide Common Dial : ☎189 (\*Connect to a nearby child guidance center)

**Time** 24 hours



**Inquiry** Home and Child Counseling Section, Child Future Division (*kodomo mirai-ka, katei jido sodan-kakari*)  
☎0544-22-1230

**Time** Weekdays 8:30~17:15

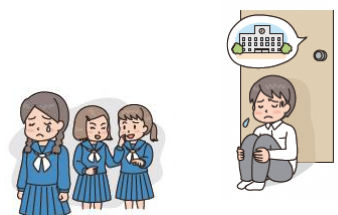
### Counseling for children with worries

If you have any worries about bullying, truancy, attitude toward life, employment, etc., please consult with us.

**Inquiry** Youth Counseling Center (*Seishonen sodan center*) : ☎0544-22-0064  
Bullying 110 (*Ijime 110*) : ☎0544-22-1252

E-mail Counseling : ✉ [e-sodan@city.fujinomiya.lg.jp](mailto:e-sodan@city.fujinomiya.lg.jp)

**Time** Weekdays 9:00~16:30 (Until 20:00 on the 2nd and 4th Wednesdays)



The Japanese fiscal year begins in April and ends in March.

Example:

FY2021 (from April 2021 to March 2022)

FY2022 (from April 2022 to March 2023)



## Notice

## Educational assistance for elementary / junior high school students

For those families with elementary / junior high school students who are having difficulty paying educational expenses (school lunch fee, school supplies fee, etc.) due to financial reasons, subsidies would be provided.

**Eligibility** Those who receive the Child Support Allowance or who are exempted from citizen's taxes, etc.

**Application** Fill out an application form available at the school and submit it to the school.

※Those who moved in after January 2021 and have not received the Child Support Allowance are required to submit a proof of income tax, etc.

**Inquiry** School Education Division (*Gakko Kyoiku-ka*) ☎0544-22-1184

## Notice

## Child Support Allowance

Allowances are provided to child caregivers, such as single-parent families, who meet one of the following conditions. There are certain other conditions as well.

- ☐ Parents have divorced.
- ☐ Father or mother is (1) death, (2) alive or dead unknown, (3) detained for more than 1 year, or (4) has a domestic violence protection order issued.
- ☐ Abandoned by father or mother for more than 1 year.
- ☐ Father or mother has a severe disability.
- ☐ Births outside of marriage

※Eligible until the first March 31 after a child turns 18 years old.

**The monthly payment amount will be changed from April.**

Payment Amount	Until March (before change)	From April (after change)
Full payment	43,160yen	43,070yen
Partial payment	10,180yen-43,150yen	10,160yen-43,060yen
Addition for 2nd child	5,100yen-10,190yen	5,090yen-10,170yen
Addition for 3rd and subsequent children	3,060yen-6,110yen	3,050yen-6,100yen

**Inquiry** Child Future Division(*Kodomo Mirai-ka*) ☎0544-22-1146

## Information on Seniors, Health, Medical Care, Nursing Care, and Disabilities

### Notice

### Recommendations for group gynecological examinations (breast and cervical cancer examinations)

Breast cancer is the most common cancer among women and is the number one cause of cancer death. Cervical cancer has been increasing among women in their 20s to 40s in recent years.

By detecting the disease before symptoms appear, it can be expected to lead to early treatment and even cure.

In the group gynecological examinations, breast and cervical cancer examinations are available on the same day.

If you wish to take only breast cancer examination, please contact us. You can also take cervical cancer examination only.

#### <Those who wish to take both examinations>

**Eligibility** Women who are citizens over 40 years old and have not taken breast and cervical cancer examinations in FY2021.

**Capacity** 60 people per day

**Fee** 2,040 yen

**Others** The following people are not eligible to apply.

- ☐ Pregnancy
- ☐ Breastfeeding, Less than 1 year after weaning, Less than 2 years after delivery
- ☐ Undergoing treatment for breast disease
- ☐ Wearing a pacemaker
- ☐ Had breast augmentation surgery
- ☐ Have a shunt, port, or other tube in the upper body

#### <Those who wish to take cervical cancer examination only>

**Eligibility** Women who are citizens over 20 years old and have not taken cervical cancer examination in FY2021.

**Capacity** 20 people per day

**Fee** 1,020 yen

**Others**

- If you have artificial joints that restrict opening and closing, please consult with your doctor before applying.
- If you are on your menstrual period, you may not be able to take an examination. Please avoid before or after your scheduled menstrual period.

#### <Common Information>

**Time** June 17 (Fri), July 8 (Fri), 19 (Tue), August 24 (Wed), September 5 (Mon), 28 (Wed), October 11 (Tue), 31 (Mon), November 11 (Fri), 24 (Thu)

**Place** Health Center (*Hoken Center*)/ Shibakawa Hall (*Shibakawa Kaikan*)\*October 11 (Tue) only

**Application** From May 25 (Wed), By phone or on the city's official website

**Inquiry** Health Promotion Division (*Kenko Zoshin-ka*) ☎0544-22-2727

**HP** トップページ>市民の皆さんへ>健康・福祉>健康・医療>乳がん検診・子宮頸がん検診のお知らせ



## Notice

## Subsidies for the cost of medical and brain examinations

Partial subsidies are provided to cover the cost of medical examinations (*ningen dokku*) and brain examinations (*no dokku*) for members of the National Health Insurance and the Medical Insurance for the Elderly in the latter stage of life at designated medical institutions.

### < medical examinations (*ningen dokku*) >

Eligible people	National Health Insurance members over 40 years old
Subsidy	9,940 yen
Application	After the medical examination, bring your insurance card, the results, the receipt, and the bank transfer details to the Insurance and Pension Division counter.

Eligible people	National Health Insurance members under 39 years old Medical Insurance for the Elderly in latter stage of life members
Subsidy	Partial subsidies for the cost of an examination
Application	After making an appointment at a medical institution, bring your insurance card to the Insurance and Pension Division counter before your examination.

### < brain examinations (*no dokku*) >

Eligible people	National Health Insurance members Medical Insurance for the Elderly in latter stage of life members
Subsidy	31,500 yen
Application	After making an appointment at a medical institution, bring your insurance card to the Insurance and Pension Division counter before your examination.

**Others** Medical examinations (*ningen dokku*), brain examinations (*no dokku*), specific medical examinations and medical examinations for the elderly in the later stages of life cannot be subsidized in duplicate.

**Inquiry** Insurance and Pension Division (*Hoken nenkin-ka*)

National Health Insurance Members; ☎ 0544-22-1138

Medical Insurance for the Elderly in latter stage of life Members; ☎ 0544-22-1482

**HP** トップページ>市民の皆さんへ>税・保険・年金>保険>人間ドック・脳ドック・40歳未満健診助成のご案内



## Notice

## Reduction or exemption of KEI JIDOSHA\* tax (by type) for persons with disabilities

\*Small Cars of Japanese Standard

We will accept applications for reduction or exemption of KEI JIDOSHA tax (by type) for FY2022.

### Eligibility

- ①A car owned by a person over 18 years old who has a Physical Disability Certificate (*shintai shougaisha techo*).
- ②A car owned by the person who has one of the following or by a person with the same livelihood.
  - ・ Physical Disability Certificate (*shintai shougaisha techo*) (under 18 years old)
  - ・ Rehabilitation Certificate (*ryoiku techo*) A
  - ・ Mental Health and Welfare Certificate (*seishin shogaisha hoken fukushi techo*) (Grade 1)

**Application** At the counter from May 12 (Thursday) to June 3 (Friday)

### Others

- ・ Please contact us in advance. We will explain what to bring.
- ・ Only one car per person with disabilities is reduced or exempted.

**Inquiry** City Tax Division (*Shimin zei-ka*) ☎ 0544-22-1125 FAX 0544-22-1227

**HP** トップページ>市民の皆さんへ>税・保険・年金>税金>軽自動車別（種別割）の減免について



## Information on Events, Applications, Notices, National Insurance, Pensions, Subsidies, Aids, Businesses

### Recruitment Recruitment of tenants for Municipal Housing

We are recruiting tenants for July 2022.

More details will be posted on the city's official website from May 2 (Monday).

The drawing will be held on May 16 (Monday).

**Application** At the counter from May 2 (Monday) to 11 (Wednesday)

**Place** Building and Housing Division (*Kenchiku Jutaku-ka*), 5th floor of City Hall

**Inquiry** Building and Housing Division (*Kenchiku Jutaku-ka*) ☎0544-22-1163

**HP** トップページ>市民の皆さんへ>住まい・ペット・動物>住まい>市営住宅入居者募集案内



### Recruitment To all foreigners, 🗣️

にほんご べんきょう  
日本語を勉強できます。

**You can learn Japanese.**

When	Every Tuesday from May 10 to July 12, 19:00-20:30
Where	Exchange Center “ <i>Ekimae Koryu Center KIRARA</i> ”
Number of applicants	10 foreigners
Fee	3,000 yen
Application	Please come to the “ <i>Ekimae Koryu Center KIRARA</i> ”.
Contact number	Fujinomiya Association for International Relations “ <b>FAIR</b> ” ☎0544-22-8111

### Notice Sending a property tax notice

A notice of property tax and city planning tax payment will be sent to owners of land, houses, and depreciable assets as of January 1 in mid-April.



#### ◆In case of the owner's death

Please pay it by the heirs. Tax payment notices and other documents will be sent to the representative of the heirs, so please submit the "Notification of Designation of Representative of Heirs".

### ◆If you have lost your tax payment notice or tax statement

It cannot be reissued. If you have lost it, please check your tax payment details in "nayose-cho" issued by the Tax & Premium Collection Division (*Shuno-ka*) on the 1st floor of City Hall and make your payment. Payment slips can be reissued at the Tax & Premium Collection Division (*Shuno-ka*).

### ◆Please let us know in such a case

- When the use of land is changed
- When a house is newly built or expanded
- When a house is demolished
- When the use of a house is changed

(Examples)

- When it is changed from a store to being used as a residence
- When the owner of an unregistered house is changed

**Inquiry** Property Tax Division (Shisan zei-ka) ☎0544-22-1127

## Notice

### Please inform us of any damage or abnormalities on the city roads.

Information from citizens is very important to maintain safe roads.

To ensure that people can use the roads safely, the city repairs potholes and sinkholes in the roads, inspects gutters and gutter covers for damage, and carries out repair work.

Especially, road surfaces are easily damaged by heavy and prolonged rains, so please let us know if you find any potholes in the road.

You can also make a report from the "市民レポート (Citizen's Report)" section of the Fujinomiya City official LINE "くらし (Life)" page.

**Inquiry** Road Division (*Doro-ka*) ☎0544-22-1240

\*Please call a duty staff on Saturdays, Sundays, holidays, and after hours. ☎0544-22-1111



← Scan this to register as a LINE friend.

## National Health Insurance

### National Health Insurance

#### In such a case, notify us within 14 days.

To enroll in or withdraw from National Health Insurance, you are required to apply for it at the counter.

### ◆ If you are late to notify us of your enrollment

You must pay the National Health Insurance tax retroactively to the time when you became eligible for membership.

### ◆ If you are late to notify us of your withdrawal

If you receive medical treatment with your National Health Insurance Card even after enrolling in the Social Insurance, you may be asked to return the medical expenses covered by the National Health Insurance at a later date.

In such a case		What to bring
enrollment	Moved in from outside the city	Moving-out Certificate
	Withdrew from workplace health insurance, retired, or no longer insured	Certificate of withdrawal from workplace health insurance
withdrawal	Will move out of the city	Insurance card
	Enrolled in workplace health insurance	National Health Insurance and Workplace Health Insurance(A proof of enrollment in workplace health insurance if it has not issued yet.)
	Became insured by workplace health insurance	Insurance card
	Enrollee died	Insurance card
Others	Address, head of household, name, etc. has changed.	Insurance card
	Lost insurance card, soiled and no longer usable	ID (driver's license, My Number Card, etc.)
	Change of address to outside the city for schooling	Insurance card, certificate of school enrollment, etc.

**What to bring** Personal number verification document (My Number Card, etc.), ID (driver's license, etc.), Power of attorney (if a person from a different household applies for the procedure)

**Others** If you are unable to come to the counter, please contact us.

**Inquiry** Insurance and Pension Division (*Hoken Nenkin-ka*) ☎0544-22-1138

National Pension	"Pension Handbook ( <i>nenkin techo</i> )" will change to "Basic Pension Number Notification ( <i>kiso nenkin bango tsuchi-sho</i> )".
<p>From April 1, 2022, the Pension Handbook will be abolished and instead the "Basic Pension Number Notification" will be issued to new members of the National Pension System.</p> <p>The "Basic Pension Number Notification" is a certificate that you are insured by the National Pension System, instead of your Pension Handbook.</p> <p>You may be asked to present it for various pension procedures or when you join an Employee's Pension System after getting a job.</p> <p>If you have already been issued your Pension Handbook or Pension Certificate, you can continue to use it as before, so there is no need to switch to the Basic Pension Number Notification (no need to apply for reissuance).</p> <p>◆In principle, issued upon reaching 20 years of age</p> <p>The "Basic Pension Number Notification" will be sent by mail to the address registered with the Japan Pension Service (<i>Nihon Nenkin Kiko</i>) in the month of your 20th birthday.</p> <p>For those who join the pension system for the first time when they start working around the age of 20, or those who are only in the pension period of a mutual aid association, such as civil servants, it will be issued through their employer.</p> <p><b>Inquiry</b> Fuji Pension Office (<i>Fuji nenkin jimusho</i>) ☎ 0545-61-1900 Insurance and Pension Division (<i>Hoken Nenkin-ka</i>) ☎0544-22-1139</p>	

## In Our Daily Lives

Just a little bit of effort from each of us can lead to more gentle lives for others. Why don't we start with what we can do and bring it into our daily lives?

### Yasashii Nihongo (Easy and Kind Japanese)

Easy and Kind Japanese is a Japanese that is rephrased in a way that is easy to understand for foreigners, children, the elderly, and people with disabilities. Let's speak slowly, clearly, and loudly, using gestures in conversation.



#### Let's visit the city's website.

Click on "[やさしい日本語へ言い換える](#) (Rephrase to Easy and Kind Japanese)" on Fujinomiya city's official website. Furigana will be added to the Kanji characters and it can be rephrased into simple words as a whole.

#### Fujinomiya City Official Website





## Garbage /Recycling

### Inquiry

Life Environment Division (*Seikatsu Kankyo-ka*)

☎ 0544-22-1137 FAX: 0544-22-1207

### Garbage Collection Schedule

(April 2022-March 2023) is now available.

Because garbage collection days vary by community, there are five different garbage collection schedules.

### Distribution Place

General Information on the 1st floor, Life Environment Division on the 4th floor of City Hall, Community Centers, Branch Offices, and Cleaning Center

You can also check it on the city's official website.



### 外国人の皆さんへ

にほんご えいご ちゅうごくご かんこくご ぼろと  
やさしい日本語、英語、中国語、韓国語、ポルト  
がるご すぺいんご しゅうしゅうにっていひよう  
ガル語、スペイン語の 「ごみ収集日程表」 があ  
ります。

Monthly goal for  
each person

(Garbage Information)



Let's reduce the garbage  
size of one apple.

### Recycling activity incentives for used paper, etc.

We provide incentive grants to organizations that collect used papers, etc. Registration is required in advance for application.

### Eligible Organizations

Residents' associations, KODOMO-kai, FUJIN-kai, PTA, etc. in the city

### Eligible Items

Used papers, Used cloths, Milk cartons, Aluminum cans

For more information,  
please visit the city's official website.



### Services will NOT be available during Golden Week.

Garbage Collection/ Cleaning Center Reception  
May 4 (Wed) - 6 (Fri)

Pumping out urine/ Cleaning of septic tanks  
May 3 (Tue) - 8 (Sun)

## The number of population and households (As of March 1<sup>st</sup>, 2022)

	Male	Female	Total	Household
Population	64,519	65,407	129,926	57,562
Month to month basis	(- 66)	(- 68)	(- 134)	(+4)

Schedule from April 1<sup>st</sup> to May 10<sup>th</sup>■ First-aid medical Treatment Center (*Kyukyu Iryo Center*)

☎0544-24-9999 / Fax: 0544-24-9995 / Address: 12-1 Miyahara, Fujinomiya, Zip code 418-0005



Medical treatment subject	Day	Time
Internal medicine ( <i>Naika</i> ), Pediatrics ( <i>Shonika</i> ), Surgery ( <i>Geka</i> )	Weekdays	19:00-8:00 on the next day
	Saturdays	14:00-8:00 on the next day
	Sundays, Public holidays, Year-end and New year holidays	8:00-8:00 on the next day
	Sundays, Public holidays, Year-end and New year holidays	9:00-17:00

\*If your condition is severe, dial **119** for ambulance. Make sure to bring your **health insurance card** with you.

■ Emergency ophthalmological clinics (*Ganka*) Open: 9:00-17:00

\*Please make sure to contact the clinics beforehand as they may change.

Date	Clinics name/ Address	Tel
April 3	Hanazaki Ganka lin/ Aoba-cho Fuji city	0545-66-0100
April 10	Fujinomiya Goto Ganka/ Nishimachi	0544-21-3100
April 17	Kato lin Yoshiwara-bunin/ Chuo-cho Fuji city	0545-57-3000
April 24	Nagano lin/ Yunoki Fuji city	0545-60-7100
April 29	Nakanishi Ganka Clinic / Nakano Fuji city	0545-36-1800
May 1	Sugiura Ganka/ Kawanarishinmachi Fuji city	0545-65-8500
May 3	Hanazaki Ganka lin/ Aoba-cho Fuji city	0545-66-0100
May 4	Fujinomiya Goto Ganka/ Nishimachi	0544-21-3100
May 5	Kato lin Yoshiwara-bunin/ Chuo-cho Fuji city	0545-57-3000
May 8	Nakagawa Ganka/ Oiwa	0544-29-6000

■ Emergency obstetrics and gynecology clinics (*Sanfujinka*) Open: 9:00-24:00

\*Please make sure to contact the clinics beforehand as they may change.

Date	Clinics name/ Address	Tel
April 3	Fujinomiya Municipal Hospital/ Nishiki-cho	0544-27-3151
April 10	Tenjin Sanfujinka lin/ Wakanomiya-cho	0544-24-1322
April 17	Otabe Sanfujinka lin/ Hibarigaoka	0544-23-1182
April 24	Bando Ladies Clinic/ Sugita	0544-28-5800
May 1	Fujinomiya Municipal Hospital/ Nishiki-cho	0544-27-3151
May 8	Tenjin Sanfujinka lin/ Wakanomiya-cho	0544-24-1322

## Blood Donation

Date	Clinics name/ Address	Time
April 5	City Hall Northern Parking lot/ Yumizawa-cho	9:30-11:15
April 9	AEON Mall Fujinomiya/ Asama-cho	9:30-16:00 <sup>*1</sup>
April 24	AEON Mall Fujinomiya/ Asama-cho	9:30-16:00 <sup>*1</sup>
April 30	AEON Mall Fujinomiya/ Asama-cho	9:30-16:00 <sup>*1</sup>

<sup>\*1</sup> Not implemented from 12:00-13:15.

**Inquiry** Welfare Planning Division (*Fukushi Kikaku-Ka*) ☎ 0544-22-1457

## Due dates for tax or other payments

Date	Taxes to be paid
April 28	Water charges, Sewerage charges (for March usage)
May 2	Child care fee (for April usage)
	Municipal housing fee ・ Parking fee (for April usage)
May 6	Property Tax / City Planning Tax (1 <sup>st</sup> term)

## Counseling and Consultation <sup>\*No operation on holidays</sup>

**Place: Citizen counselling room, 1<sup>st</sup> floor** <sup>\*Please wear a mask when counseling.</sup>

Consultation	Date & Time
① General counseling ( <i>Ippan sodan</i> ) ② Counseling for non-Japanese residents ( <i>Gaikokujin sodan</i> ) ③ Counseling on labor matters ( <i>Rodo sodan</i> ) <sup>*Please make sure beforehand if a counselor on the day is available.</sup>	Monday-Friday, 8:30-17:00 (The reception is until 16:30.) 
④ Counseling on consumer affairs ( <i>Shohi seikatsu sodan</i> )	Monday-Friday 9:00-16:00
⑤ Attorney ( <i>Bengoshi sodan</i> ) <sup>*Appointment is required (by 12:00 the day before consulting day)</sup>	April 6, 13, 20, 27 (13:30- until the end of consultation)
⑥ Judicial scrivener ( <i>Shihosyoshi sodan</i> )	April 8 13:00-16:00
⑦ Licensed tax accountant ( <i>Zeirishi zeimu sodan</i> ) <sup>*Appointment is required</sup>	April 5, 19 13:00-15:00
⑧ Administrative scrivener ( <i>Gyosei syoshi sodan</i> )	April 15 13:30-16:30
⑨ General administrative counseling ( <i>Gyosei sodan</i> )	April 14 10:00-15:00
⑩ Consultation on the human rights ( <i>Jinken sodan</i> )	April 19 13:00-16:00
⑪ Consultation on side jobs ( <i>Naisyoku assen</i> )	Mondays and Thursdays 9:00-16:00
⑫ Patent attorney ( <i>Benrishi sodan</i> ) <sup>*Appointment is required.</sup>	April 22 15:00-17:00
⑬ Business start-up consultation ( <i>Sogyo sodan</i> ) <sup>*Appointment is required.</sup>	April 26 10:00-15:00

⑭ Real estate transaction agent ( <i>Takuchi tatemono torihikishi sodan</i> )	April 12 13:00-15:00
---	----------------------

**Inquiry** ①-⑩ Community Service Division Counseling Section (*Shimin Seikatsu-Ka*) ☎ 0544-22-1196  
 ⑪-⑬ Commerce and Industry Division (*Syoko Shinko-Ka*) ☎ 0544-22-1295  
 ⑭ Construction and Housing Division (*Kenchiku Jyutaku-Ka*) ☎ 0544-22-1163

**Place: Meeting Room 111, 1<sup>st</sup> Floor, City Hall**

Consultation	Date & Time
Pension consultation ( <i>Nenkin sodan</i> ) *Appointment is required.	April 28 10:00-15:00

**Inquiry** Fuji Pension Office in Fuji city (*Fuji Nenkin Jimusho*) ☎ 0545-61-1900



**City Hall Open Days on Holidays:** We open on the first Sunday of every month.

**April 3 (Sun), May 1 (Sun)**  
**8:30-17:00**

Division & Phone number	Services
Citizen Registration Division ( <i>Shimin-ka</i> ) ☎ 0544-22-1134	<ul style="list-style-type: none"> <li>Submission for Family Register (<i>koseki</i>) (birth, marriage, death, etc.)</li> <li>Submission of change of residence (moving into the city, moving out of the city, moving within the city, etc.)</li> <li>Application for seal (<i>inkan</i>) registration and abolition</li> <li>Issuance of various certificates (certificate of residence (<i>jyuminhyo</i>), Family Register (<i>koseki tohon</i>, <i>koseki syohon</i>), certificate of seal (<i>inkan</i>) registration)</li> <li>Renewal procedures for the electronic certificate of My Number Card</li> <li>Receiving passports</li> </ul> <p>※After 17:00, Submission for Family Register (<i>koseki</i>) are kept at the duty room on the 1st floor of City Hall.            ※Cross-issuance with Fuji City is available from 9:00 to 16:00.            ※Application for a passport is not available.            ※With My Number Card, you cannot procedures for change of residence (moving into the city).            ※With My Number Card, you can obtain a certificate of residence (<i>jyuminhyo</i>) and a certificate of seal (<i>inkan</i>) at convenience stores “Konbini”.</p>
Insurance and Pension Division ( <i>Hoken Nenkin-ka</i> ) ☎ 0544-22-1138	<ul style="list-style-type: none"> <li>Qualification and disqualification for National Health Insurance</li> </ul>

Child Future Division ( <i>Kodomo Mirai-ka</i> ) ☎ 0544-22-1146	<ul style="list-style-type: none"> <li>Application for Child Allowance and Child Medical Expense Beneficiary Certificate</li> </ul>
Tax & Premium Collection Division ( <i>Shuno-ka</i> ) ☎ 0544-22-1129	<ul style="list-style-type: none"> <li>Payment of city taxes, etc. and Consultation on payment</li> <li>Issuance of tax certificates</li> </ul> <p>※Appointment is required in advance for tax consultation. ※Tax exemption certificates, etc. that require a declaration cannot be issued</p>

### ■ After-hours service: Every Wednesday until 19:00pm

\*No service if Wednesday is holiday.

Division & Phone number	Services
Citizen Registration Division ( <i>Shimin-ka</i> ) ☎ 0544-22-1134	<ul style="list-style-type: none"> <li>Application for seal (<i>inkan</i>) registration and abolition</li> <li>Issuance of various certificates (certificate of residence (<i>jyuminhyo</i>), family register (<i>koseki tohon</i>, <i>koseki syohon</i>), certificate of seal (<i>inkan</i>) registration)</li> </ul> <p>※Cross-issuance with Fuji City and submission of change of residence are not available. ※Submission for Family Register (<i>koseki</i>) are kept at the duty room on the 1st floor of City Hall. ※These services are not available at branch offices, community centers, Tomioka Exchange Center and Ofuji Exchange Center.</p>
Tax & Premium Collection Division ( <i>Shuno-ka</i> ) ☎ 0544-22-1129	<ul style="list-style-type: none"> <li>Payment of city taxes, etc. and Consultation on payment</li> <li>Issuance of tax certificates</li> </ul> <p>※Appointment is required in advance for tax consultation. ※Tax exemption certificates, etc. that require a declaration cannot be issued</p>